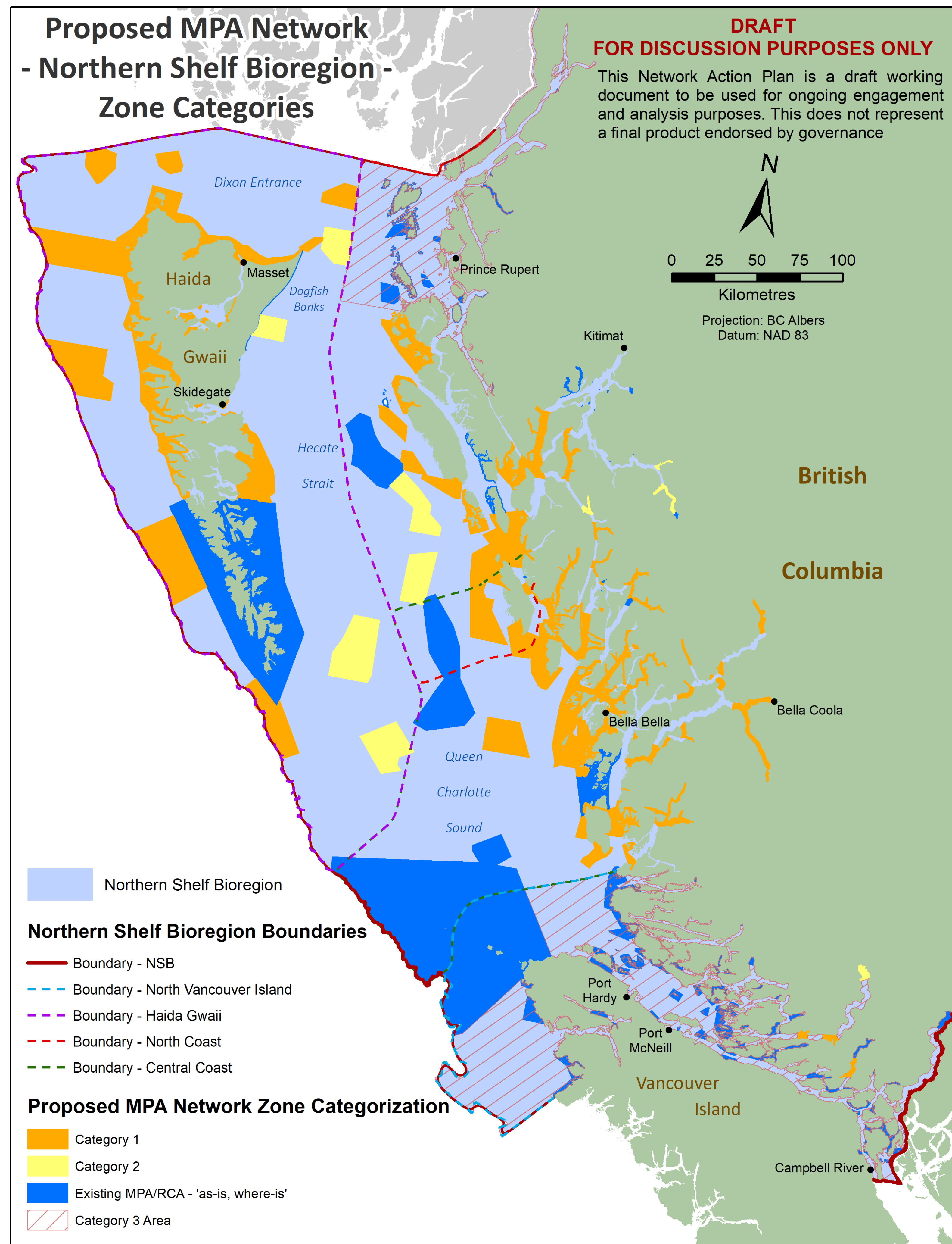


# Northern Shelf Bioregion (NSB)

**102,000km<sup>2</sup> Pop. 98,000**

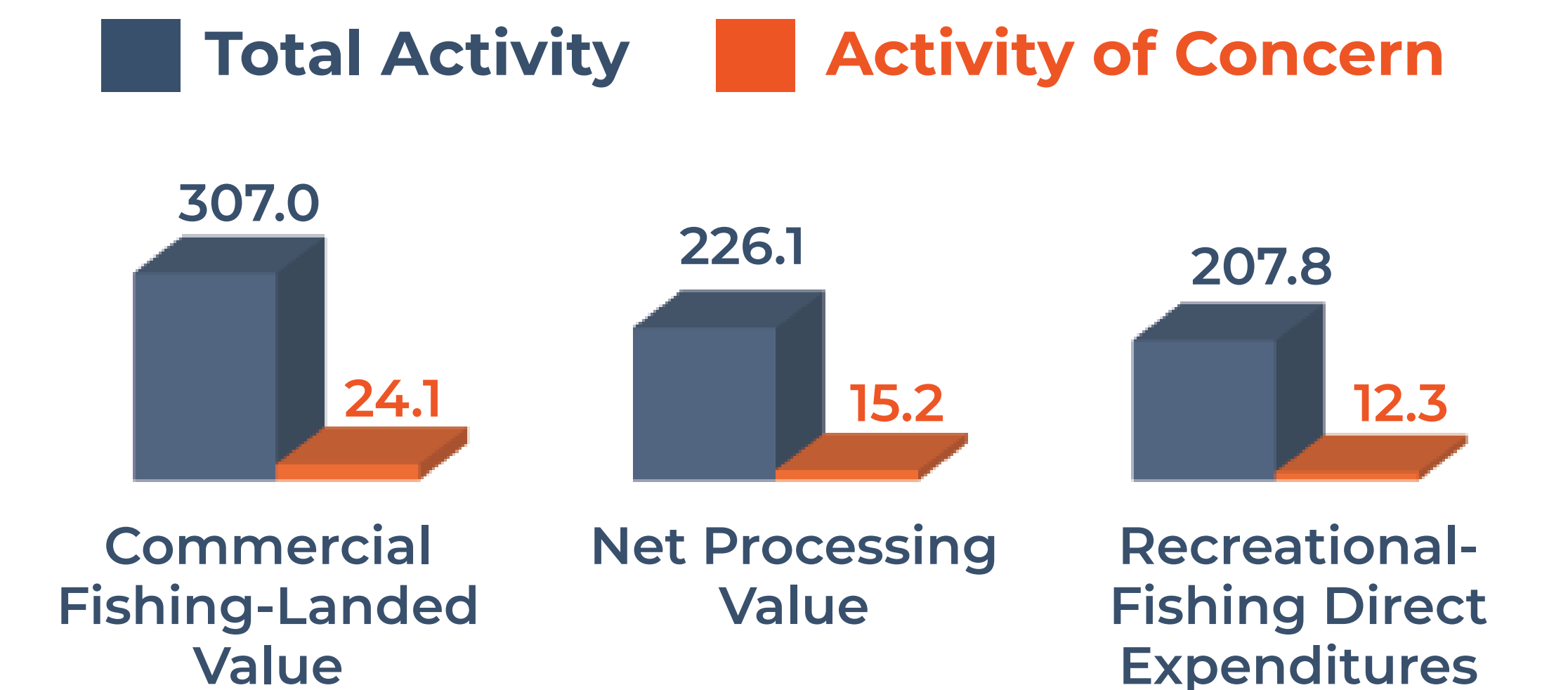
## SOCIO-ECONOMIC OVERVIEW



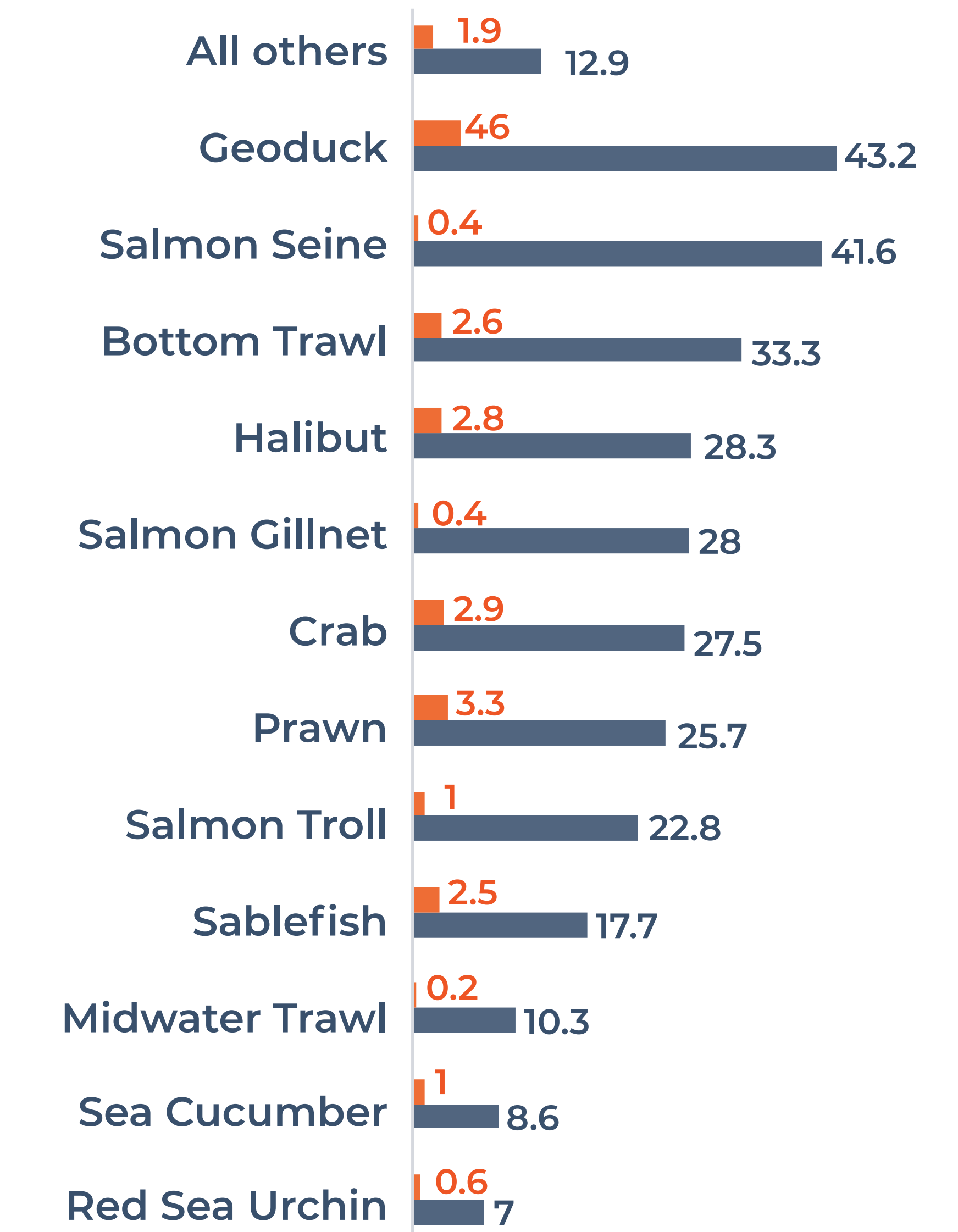
### Marine Sectors in NSB

- COMMERCIAL FISHING**  
\$307M landed value by ~2,300 vessels in proposed zones
- SEAFOOD PROCESSING**  
\$226.1M in net processed value from harvest
- RECREATIONAL FISHING**  
\$207.8M spent over 687,000 annual fishing days
- PORTS & HARBOURS**  
994 marine industrial sites
- TOURISM (COMBINED)**  
1,176 anchorages, 332 campsites, 401 dive sites, 360 rec features, 19 tourism lodges and 10 public wharves
- AQUACULTURE**  
76 finfish, 2 plant, and 66 shellfish tenures
- FORESTRY**  
533 log handling and storage tenures covering 62km<sup>2</sup>
- MARINE TRANSPORTATION**  
487,000 hours of marine vessel activity

### Output by Sector (\$M)



### Commercial Fisheries Landed Value (\$M)



### KEY NOTES

- Reference year varies by sector and is based on data availability.
- Commercial Fishing sources include *Seafood Year in Review*, fleet financial profiles, and aggregated harvester logbooks.
- Net processed value is from *Linkages Between Seafood Harvesting and Processing 2017*.
- Recreational fishing estimates are based on National Survey of Recreational Fishing and iSEA.

Prepared 26 September 2022

This poster summarizes information presented in NAP Compendium III available at [mpanetwork.ca](http://mpanetwork.ca)

**DRAFT FOR DISCUSSION ONLY**