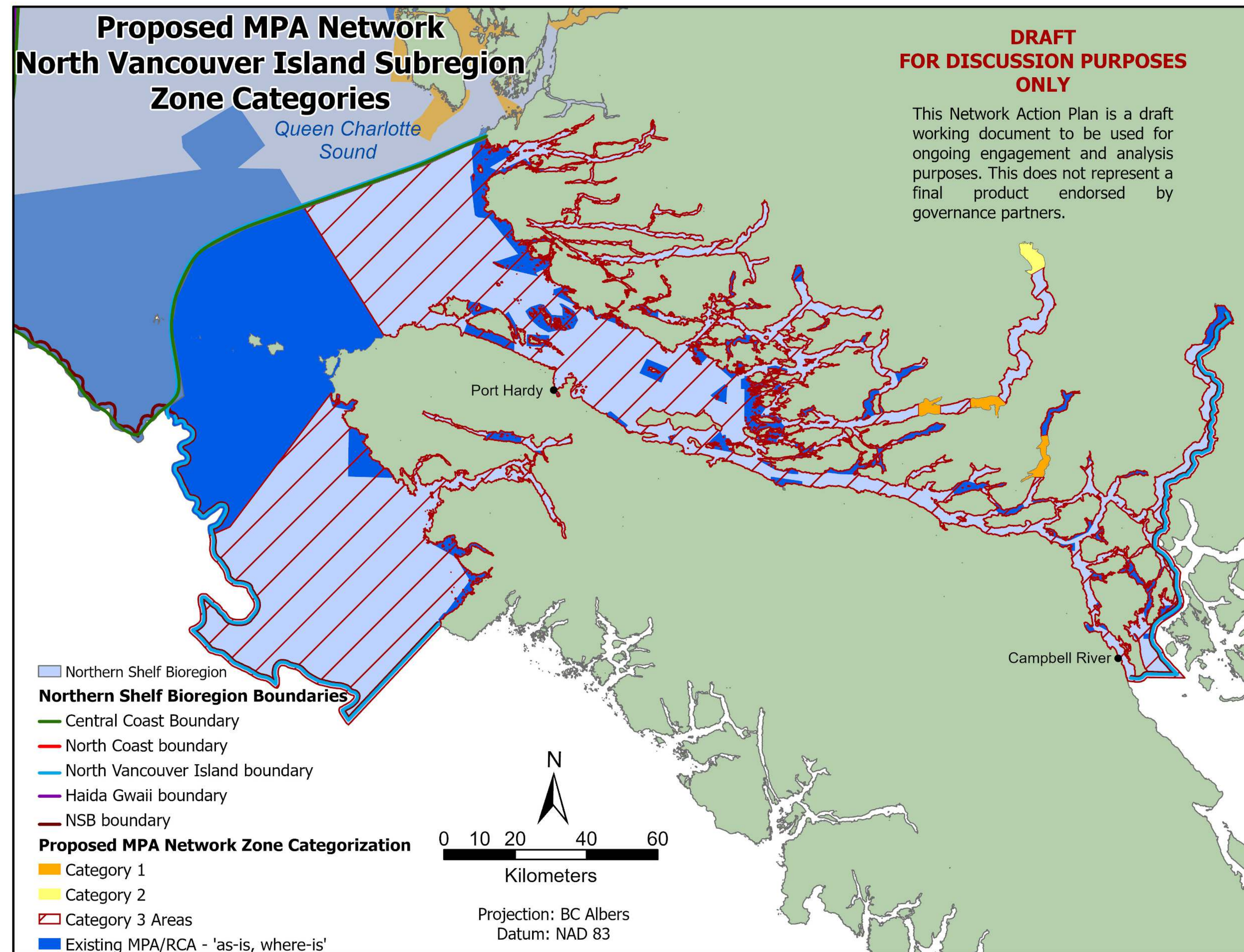


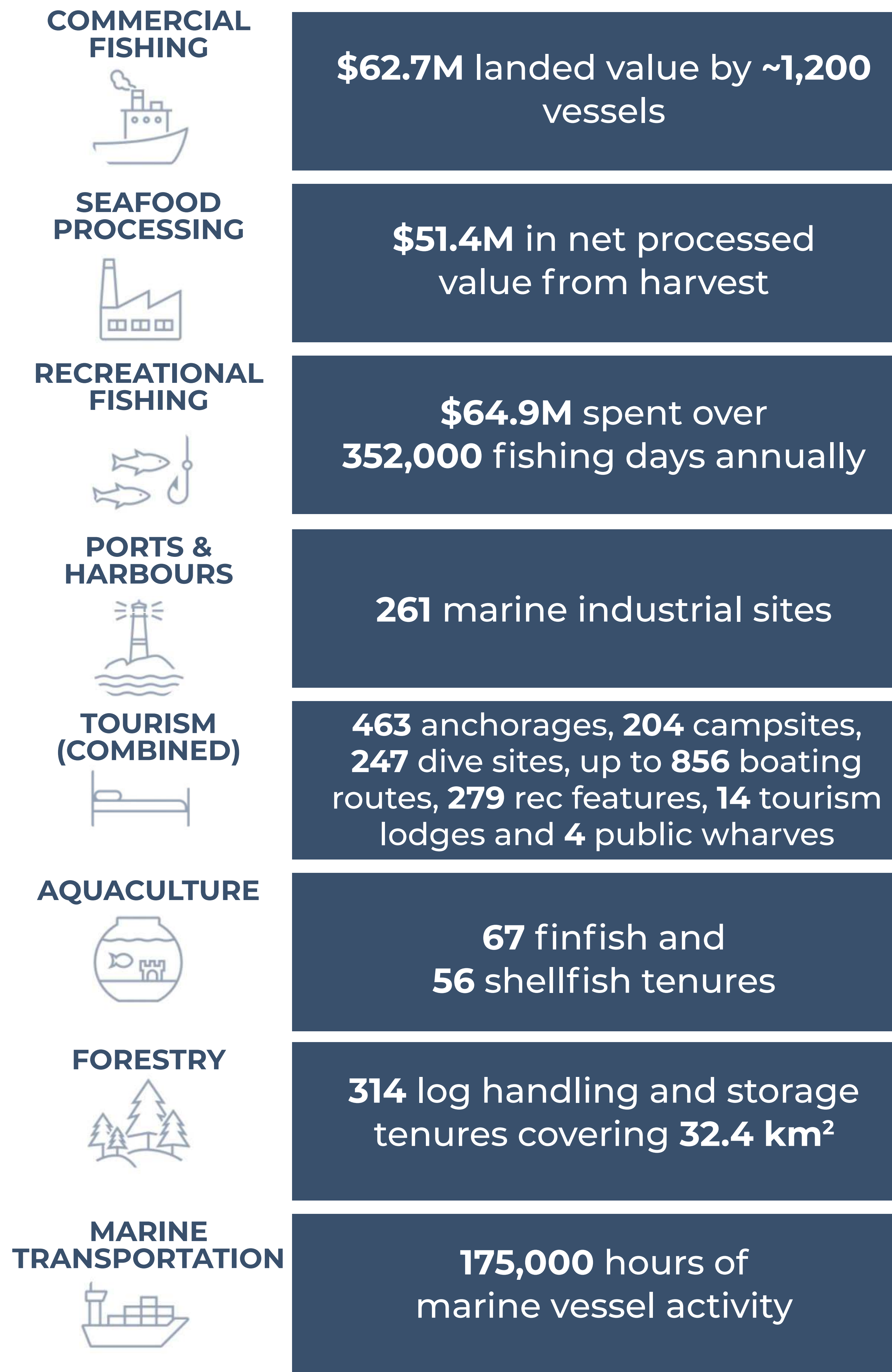
NORTH VANCOUVER ISLAND (NVI)

SUBREGION Pop. 47,000

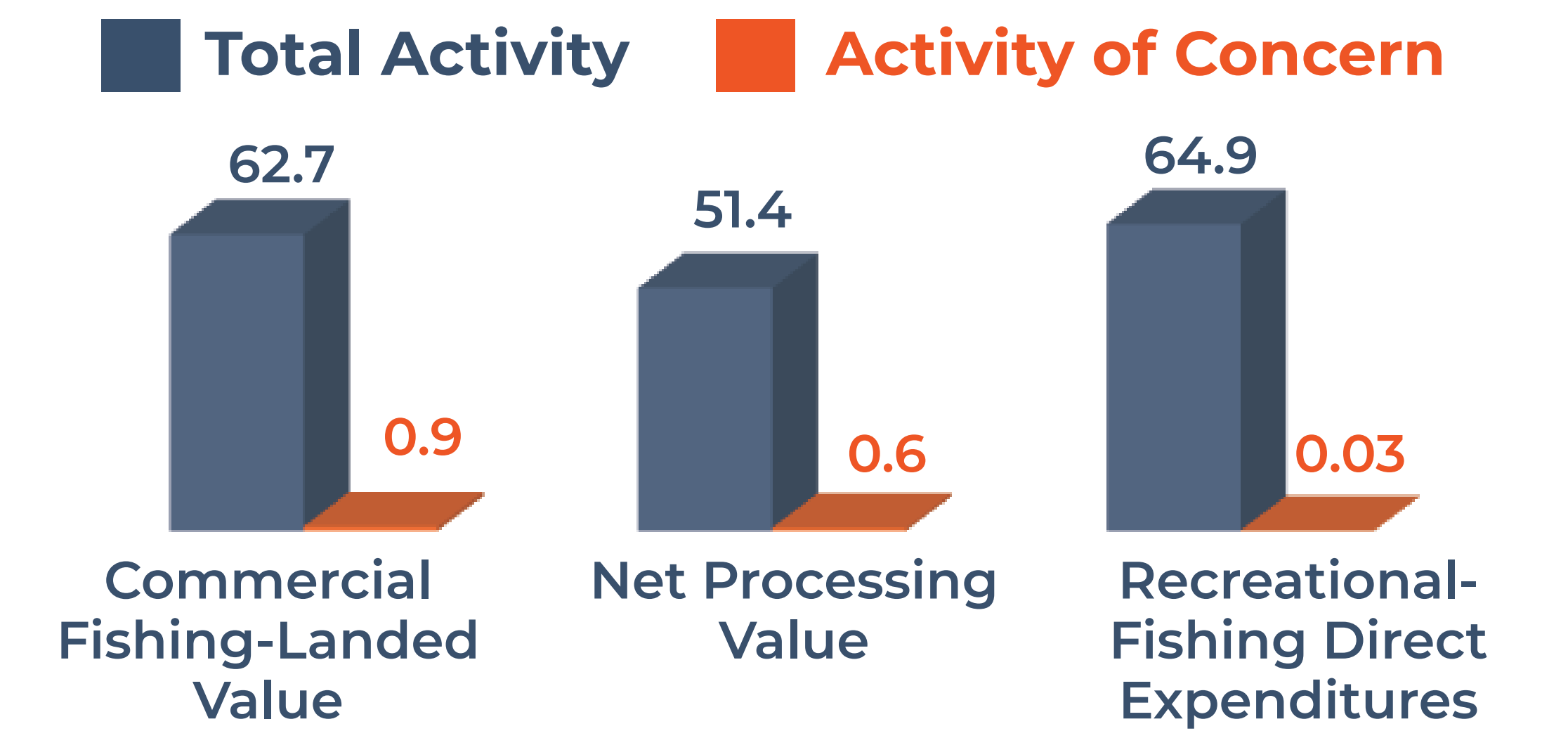
SOCIO-ECONOMIC OVERVIEW



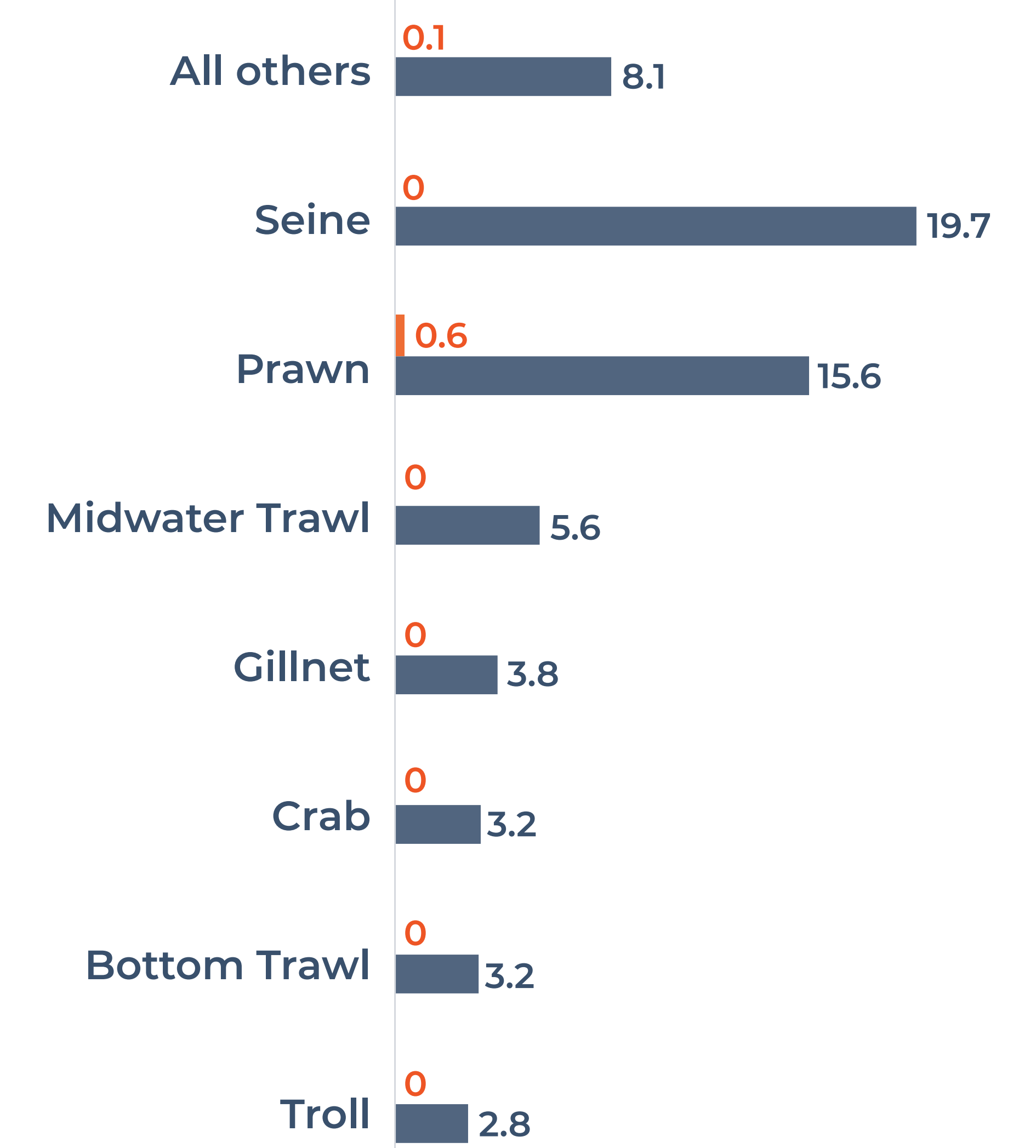
Marine Sector Baselines



Sectoral Information (\$M)



Commercial Fisheries Landed Value (\$M)



KEY NOTES

- Reference year varies by sector and is based on data availability.
- Commercial Fishing sources include *Seafood Year in Review*, fleet financial profiles, and aggregated harvester logbooks.
- Net processed value is from *Linkages Between Seafood Harvesting and Processing 2017*.
- Recreational fishing estimates are based on National Survey of Recreational Fishing and iSEA.

Prepared 26 September 2022

This poster summarizes information presented in NAP Compendium III available at mpanetwork.ca

DRAFT FOR DISCUSSION ONLY