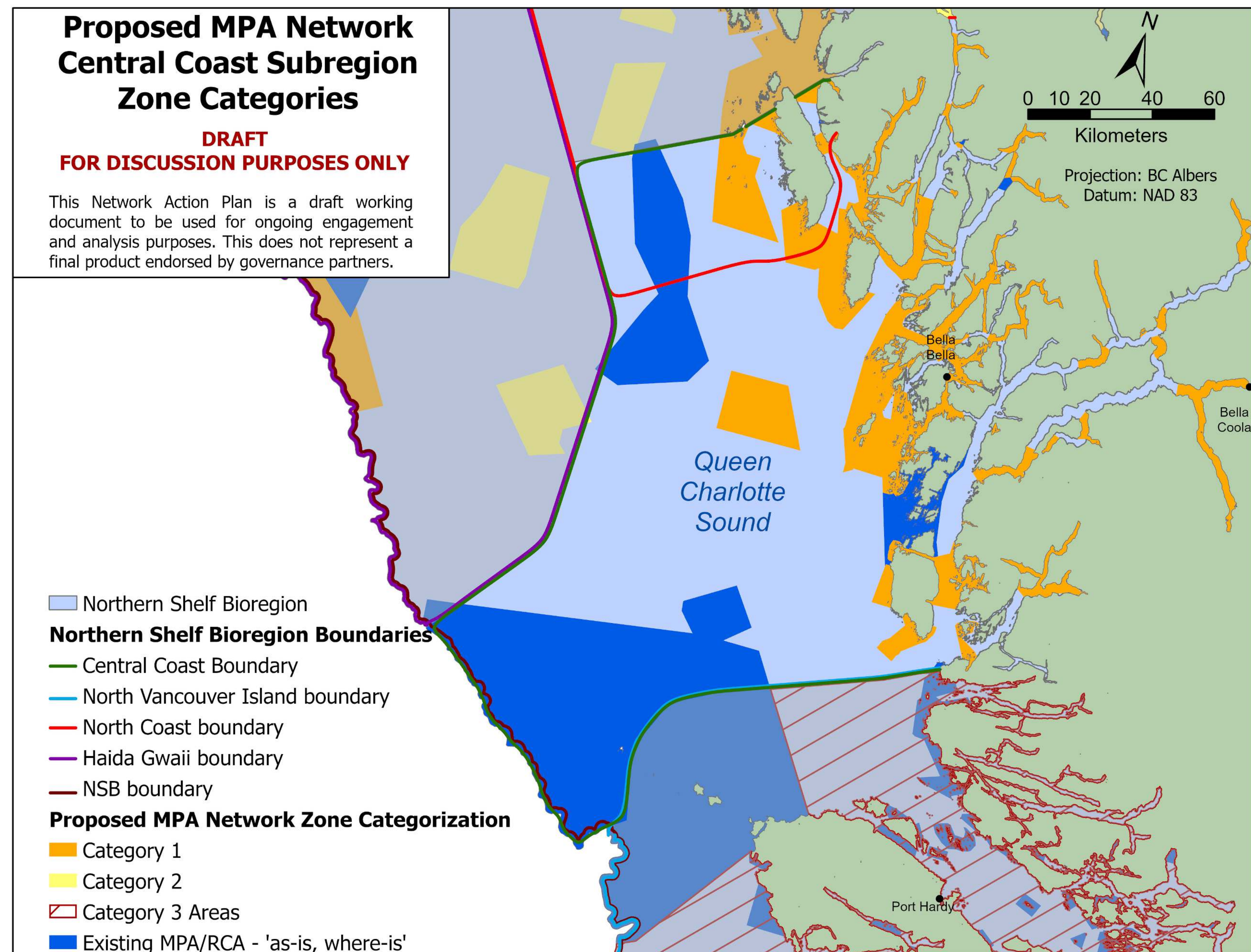


# CENTRAL COAST

## SUBREGION Pop. 4,000

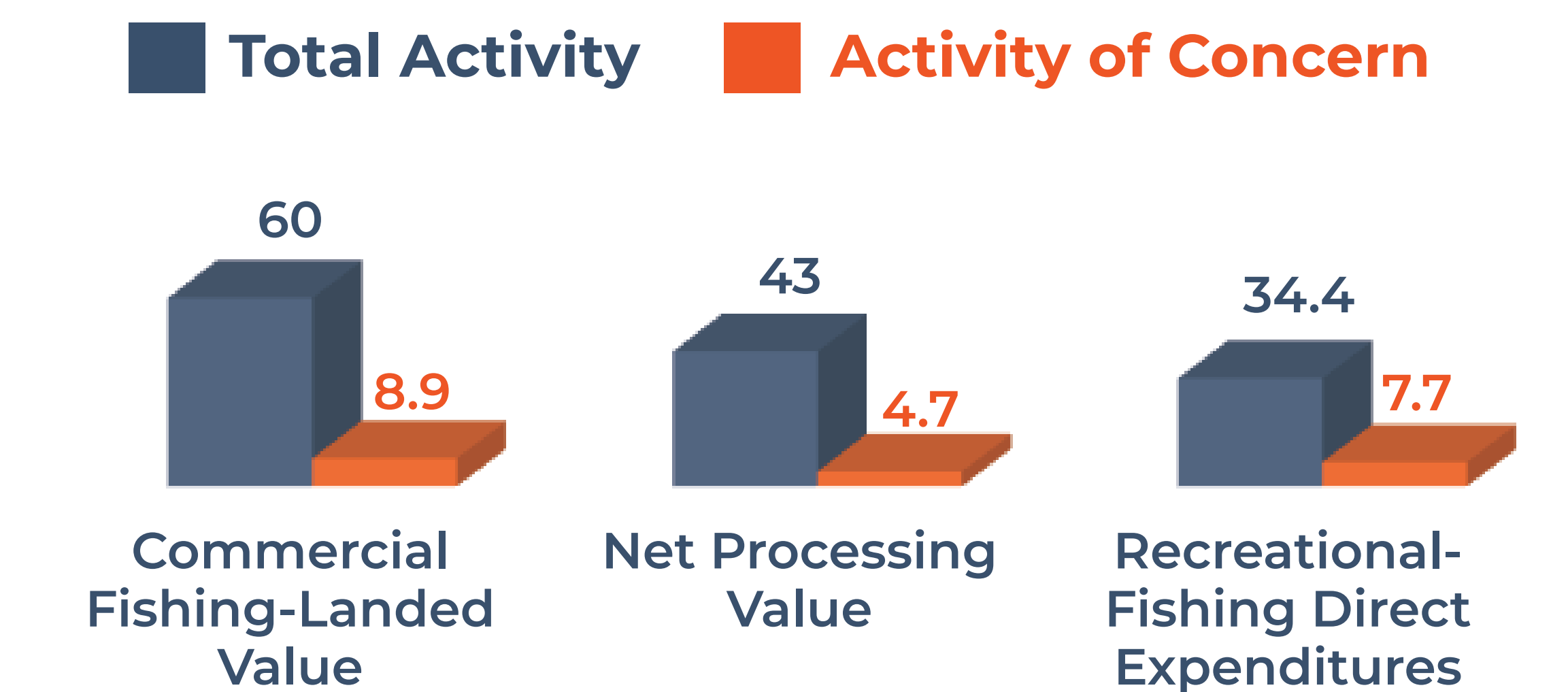
### SOCIO-ECONOMIC OVERVIEW



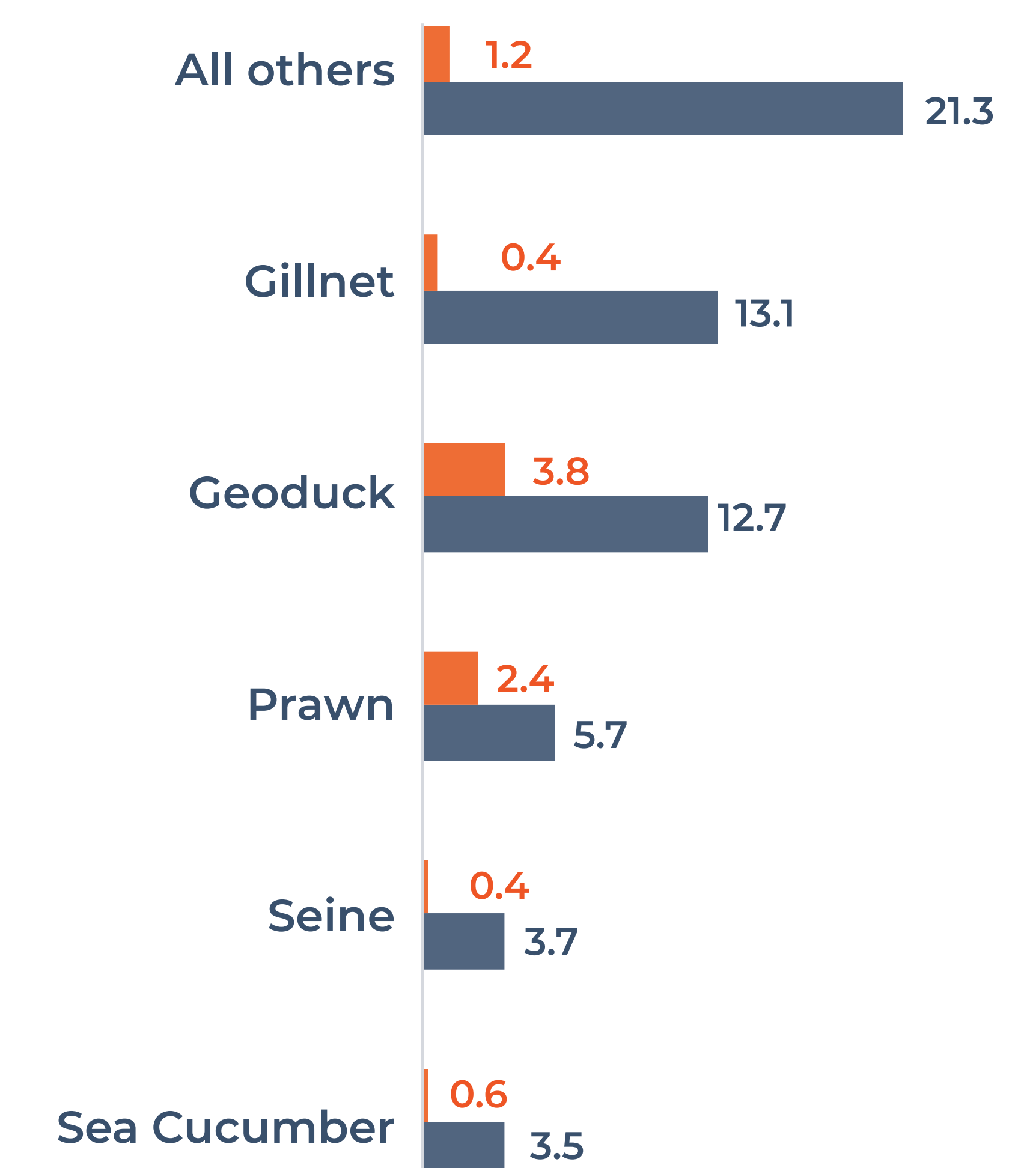
#### Marine Sector Baselines

- COMMERCIAL FISHING**  
**\$60M** landed value by ~870 vessels
- SEAFOOD PROCESSING**  
**\$43M** in net processed value from harvest
- RECREATIONAL FISHING**  
**\$34.4M** spent over 98,900 fishing days annually
- PORTS & HARBOURS**  
**65** marine industrial sites
- TOURISM (COMBINED)**  
**274** anchorages, **30** campsites, **244** dive sites, **15** rec features, **2** tourism lodges and **4** public wharves
- AQUACULTURE**  
**6** finfish and **2** shellfish tenures
- FORESTRY**  
**114** log handling and storage tenures covering **17.5 km<sup>2</sup>**
- MARINE TRANSPORTATION**  
**94,400** hours of marine vessel activity

#### Sectoral Information (\$M)



#### Commercial Fisheries Landed Value (\$M)



#### KEY NOTES

- Reference year varies by sector and is based on data availability.
- Commercial Fishing sources include *Seafood Year in Review*, fleet financial profiles, and aggregated harvester logbooks.
- Net processed value is from *Linkages Between Seafood Harvesting and Processing 2017*.
- Recreational fishing estimates are based on National Survey of Recreational Fishing and iSEA.

Prepared 26 September 2022

This poster summarizes information presented in NAP Compendium III available at [mpanetwork.ca](http://mpanetwork.ca)

**DRAFT FOR DISCUSSION ONLY**